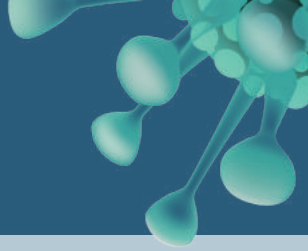




COVID-19



VISITORS TO LONG-TERM CARE

To keep our residents, families and staff safe, and in keeping with the provincial health officer's recommendations for social distancing, we are limiting the number of visitors entering our buildings.

- **No visitors at this time**
- **Exception may be made for 1 essential, adult visitor - who passes screening - to visit residents who are actively dying.**

Long-Term Care



No
Visitors