



GEORGE
DERBY
CENTRE

THE DERBY DIGEST

November 2022



Coronavirus COVID-19
BC Centre for Disease Control | BC Ministry of Health

Guidelines for Visitors to Long-Term Care
and Seniors' Assisted Living Facilities



**DO NOT
ENTER IF SICK**



Cough or sneeze into
your elbow and do not
touch your face



All visitors must be fully
vaccinated against COVID-19
to enter the facility*



All visitors must provide
acceptable proof of
COVID-19 vaccination



All visitors are required to wear
a medical mask in hallways,
common areas and multiple
occupancy rooms



Visits will not be
permitted during active
COVID-19 outbreaks



Use soap and water
or alcohol-based
hand sanitizer



Clean hands before
and after visiting





GEORGE
DERBY
CENTRE

Mission

In a home-like environment we provide resident and family centered care while recognizing our veterans' legacy.

Vision

To be a community committed to compassionate care, innovation and excellence.

Values

Resident & family centered, integrity, inclusion, diversity, safety, respect & dignity.

PET THERAPY VISITS ARE BACK!

3 PM Visits with Agnes & Poppy

November 8th - Main North

November 15th - BSTN

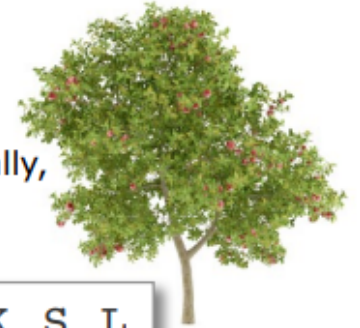
November 22nd - Lower North

November 29th - Main South



The Giving Tree

The **bold** words listed below can be found vertically, horizontally, diagonally, forward, and backward.



I	F	L	W	E	E	D	I	H	G	W	X	K	S	L
Z	E	F	O	R	E	S	T	N	C	I	Z	T	I	M
K	D	I	A	V	C	V	I	P	E	K	L	P	L	E
N	A	A	L	L	E	K	B	V	L	K	L	S	V	X
U	H	H	O	U	L	R	S	C	M	A	B	W	E	T
R	S	Z	W	E	A	I	R	E	A	P	Y	I	R	R
T	J	U	A	N	X	X	Q	X	L	S	Z	N	S	E
P	J	V	C	S	N	W	O	R	C	P	B	G	T	E
P	E	H	D	E	C	V	U	X	M	O	P	I	E	M
S	E	R	T	H	O	U	R	U	Y	Z	R	A	I	U
S	C	L	I	M	B	V	T	E	A	R	B	L	N	K
N	E	N	I	K	Z	S	I	O	T	U	H	R	P	H
Q	N	E	L	P	E	M	F	N	M	C	L	X	M	Z
F	K	C	N	I	M	E	Q	V	L	N	H	E	X	E
G	S	Y	V	R	A	R	S	M	C	N	N	I	F	F

APPLES

BOY

CLIMB AND PLAY

HIDE-AND-GO-SEEK

KING OF THE FOREST

LOVE

MAKE **LEAVES** INTO **CROWNS**

SHADE

SHEL **SILVERSTEIN**

STUMP

SWING FROM **BRANCHES**

TRUNK

*See a Rec. Staff for **prizes** once you've completed the puzzle!

Remembrance Day

George Derby Centre will be having a Remembrance Day ceremony in Town Hall for residents only this year.

If your loved one is a Veteran, please drop off their dress uniform/dress shirt and pants, and metals if available, by November 5th.

If you have any questions please contact Mallory Yeager at myeager@georgederby.ca.



Pledge a Flag

This Remembrance Day, George Derby Centre is taking pledges to promote awareness and to honour the heroes amongst us for their extraordinary sacrifices. For every \$5 donation received in pledges, a Canada flag will be placed on the George Derby property in honour of a veteran.

All proceeds will go toward improving the lives of the veterans of George Derby Centre.

To pledge a flag with a \$5 donation, please visit the donation page at www.georgederby.ca.



Aldor Acres!



Halloween Fun!

Happy Halloween



November Special Events

November 4th:
Pledge a Flag!

November 11th:
Remembrance Day Ceremony
(Residents Only)

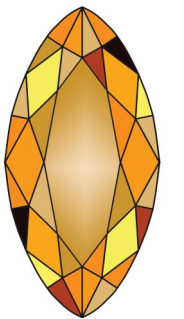
November 16th: Dine In Breakfast

November 24th: November Birthday
Party with Mike Sanyshyn

November

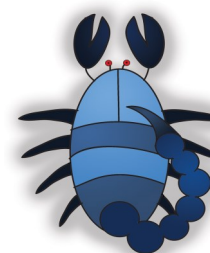
Birthstone of the Month - Yellow Topaz

Topaz, the birthstone for November, likely gets its name from the Red Sea's Island of Topazios (now called Zabargad). Pure topaz is a colorless or "white" stone. However, it's often tinged with other minerals to create shades of yellow, pink, orange, and blue. It's most commonly found in shades of yellow—a shade Cleopatra was said to be especially fond of, since it reminded her of honey. The ancient Greeks associated topaz with strength. During the Renaissance, Europeans believed this was the stone to use to break a magic spell.



Flower of the Month - Chrysanthemums

Chrysanthemums—also called "tansies," "mums," or "chrysanth" —bloom in the fall, bringing extra cheer to colder climates when most flowers take a break. This hugely popular tropical flower, which comes in a range of sizes, gets its name from the Greek words chrysos (gold) and anthemon (flower). Its membership in the compositae or asteraceae family puts it in the edible flower category along with daisies and sunflowers. They



November Zodiacs

Scorpio (The Scorpion) November 1—21
Sagittarius (The Archer) November 22—30



GDC Fall Fair!!



GDC Fall Fair!!

